

Majors Field Amateur Radio Club



March 27, 2014

REGULAR BUSINESS MEETING

AGENDA

- ✘ Opening
- ✘ Announcements
- ✘ Officer Reports
- ✘ Old Business
- ✘ New Business
- ✘ Presentation – Michael Ketchum – K5MDK – Winlink Gateway
- ✘ Adjournment

ANNOUNCEMENTS

✘ WE NEED CLUB NEWSLETTER ARTICLES

Contact Michael Ketchum – K5MDK

✘ Belton Ham Expo

Saturday, March 29th

Bell County EXPO center, 301 Loop 121, Belton, TX

✘ Texas State Parks on the Air

Saturday April 5th ~ Sunday April 6th

www.tspota.com

✘ March of Dimes Public Service Event

Saturday April 12th White Rock Lake – Dallas

Contact Bill Engel K5DHY – k5dhy@arrl.net

ANNOUNCEMENTS

✘ Majors Field ARC Club Meeting

Thursday, April 24th 11:45am

✘ MS150 Public Service Event

Saturday May 3rd ~ Sunday May 4th

<http://garlandr.s412.sureserver.com/PublicService/uplist.html>

✘ Wild Ride Public Service Event

Saturday May 17th

<http://y71a.qr.ai>

OFFICER REPORTS

- ✘ Secretary / Treasurer
Rob Draper – KE5SSA
- ✘ Vice President
Samuel Mize – KE5SSM
- ✘ President
Michael Ketchum – K5MDK

OLD BUSINESS

- ✘ E-Club Membership
- ✘ Club By-Laws
- ✘ Club UHF Repeater

UHF REPEATER

✘ History

- + Taken off the air
- + Was linked to NCTC network at one time.
NCTC now uses 420MHz radio linking / Echolink.
- + Is not coordinated via Texas VHF-FM Society.
- + Needs a new location.

✘ Discussion going forward

NEW BUSINESS

× ?

PRESENTATION

Michael Ketchum – K5MDK



- + *What it does*
- + *What it is*
- + *What it takes*
- + *What I plan on doing with it*

WHAT IT DOES

A radio message service that is ...

- easy to configure and use across bands/platforms.

- redundant / reliable

- works transparently with Internet E-Mail

- provides bulletin distribution – customizable

- web accessible

- internet direct accessible via application

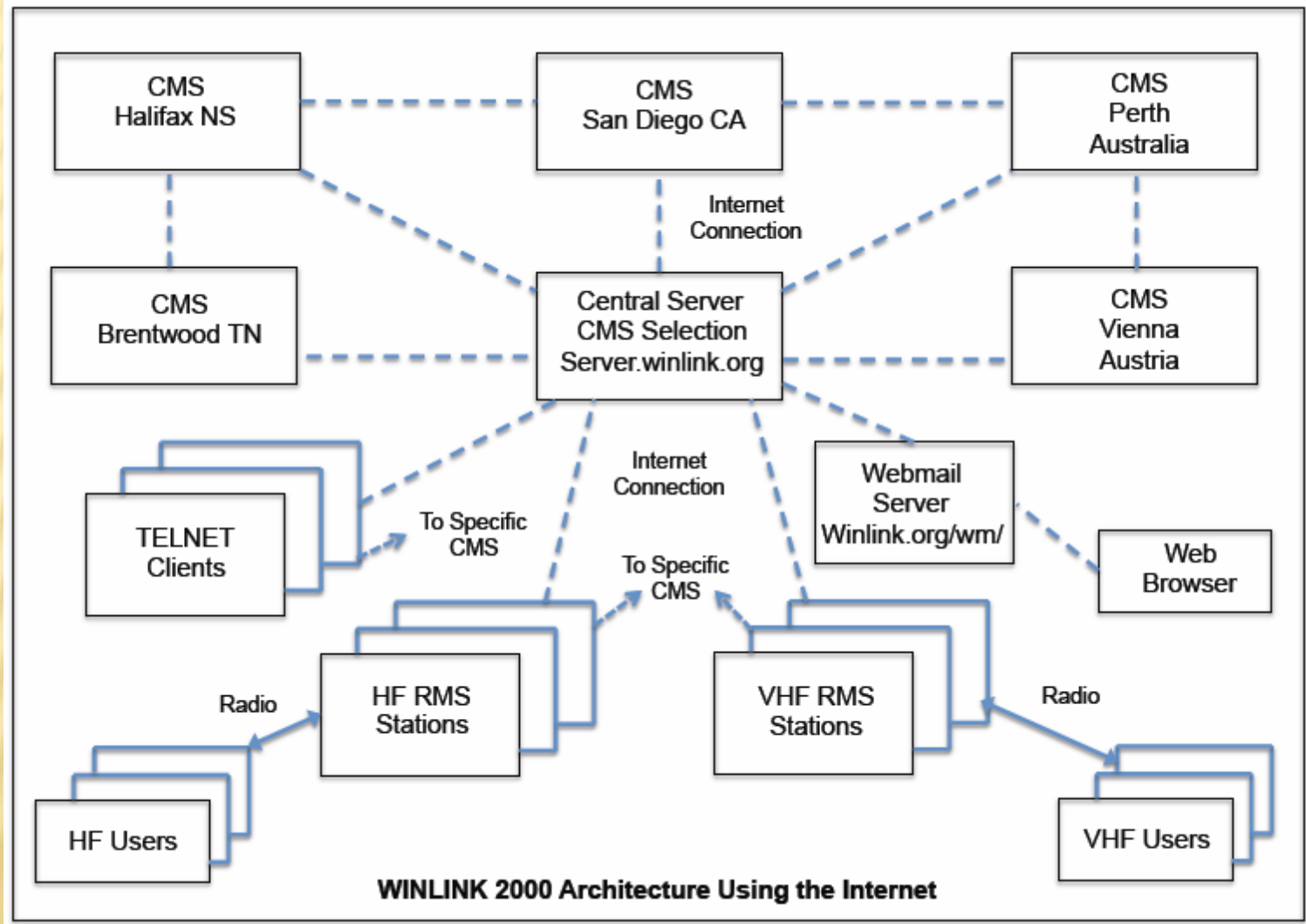
- provide EOC members messages without internet

WHAT IT IS

Winlink 2000

- ✘ A network of servers and radios
 - + Servers that provide message store/retrieval/delivery
 - + Gateways that provide access for clients
 - + Clients that connect to gateways from anywhere

WHAT IT IS



WHAT IT TAKES

VHF/UHF PACKET

✘ GATEWAY

- + Dedicated VHF/UHF radio base station
- + Dedicated TNC
- + Dedicated Server PC or CPU
- + One of the various Gateway Software Packages:
 - ✘ *RMS Trimode* – Windoze – Pactor, Winmore, Packet for HF
 - ✘ *RMS Relay* – Windoze – a store and forward service
 - ✘ *RMS Packet* – Windoze – Packet for VHF/UHF
 - ✘ *Linux RMS Gateway* – Linux – Packet for VHF/UHF

WHAT IT TAKES

HF PACKET

✘ GATEWAY

- + Dedicated HF radio base station
- + Dedicated TNC or sound interface
- + Dedicated Server PC or CPU
- + One of the various Gateway Software Packages:
 - ✘ RMS Trimode – Windoze – Pactor, Winmore, Packet for HF
 - ✘ RMS Relay – Windoze – a store and forward service

WHAT IT TAKES

HF / VHF / UHF

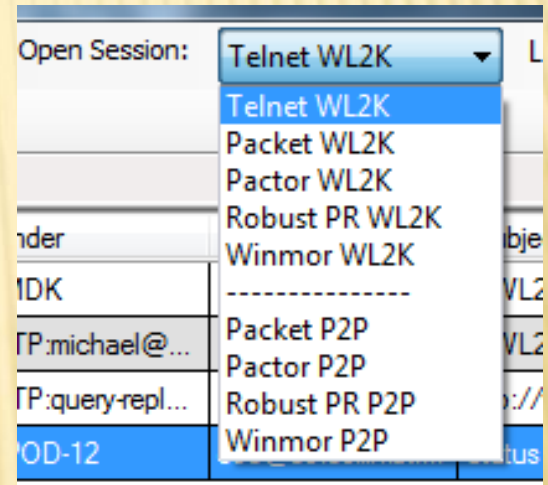
✘ Client

<i>Software</i>	<i>OS</i>	<i>Telnet</i>	<i>AX25 Packet</i>	<i>PACTOR 1~3</i>	<i>PACTOR4</i>	<i>WINMORE</i>	<i>Sound Card</i>	<i>TNC</i>
RMS Express	Win XP+	Yes	Yes	Yes	Yes	Yes	Yes	Yes
Paclink	Win XP+	Yes	Yes	Yes	<u>No</u>	<u>No</u>	Yes	Yes
Airmail	Win95+	Yes	Yes	Yes	Yes	<u>No</u>	Yes	Yes
Outpost	Any	Yes	Yes	<u>No</u>	<u>No</u>	<u>No</u>	Yes	Yes
Dumb Terminal	Any	<u>No</u>	Yes	<u>No</u>	<u>No</u>	<u>No</u>	Yes	Yes
APRS	N/A	<u>No</u>	Yes	<u>No</u>	<u>No</u>	<u>No</u>	<u>No</u>	Yes

WHAT IT TAKES

RMS Express Client Software

- ✘ Connects to the CMS servers a few ways:
 - + Telnet (Internet) to WL2K CMS directly
 - + Packet Radio AX.25
 - + Robust Packet Network (robust-packet.net)
 - + WINMORE for HF
 - + The above with Point – to – Point connection.



WHAT I PLAN ON DOING

VHF WL2K Gateway in Greenville



WHAT I PLAN ON DOING

✘ The goal

- + To provide **EmCom** email messaging to this area
- + To provide messaging for future **Public Service** events
- + To provide general **Public email** access to WL2K system.
- + To promote **Ham Radio WL2K** in this area.

✘ The Gateway Project

- + Phase 1 – WL2K Gateway using Linux PC, TNC-X, Kenwood TM-281A
 - ✘ 90% complete
 - ✘ Incremental testing underway
- + Phase 2 – WI2K Gateway using Raspberry Pi, TNC-Pi, Kenwood TM-281A